



**SQS PractiQ®**  
Rapid Testing for SAP® Implementations

## Reducing risks, costs and time expenditure associated with SAP® projects

SAP® solutions are part of the standard software in many companies today. Often, companies aim to use them as a complete solution that is meant to replace a heterogeneous IT landscape. Accordingly, these systems are business-critical, complex and highly integrated. As well as that, they are subject to constant technology-driven or business-driven change, which brings with it a need for large amounts of testing at regular intervals. The SQS solution Rapid Testing for SAP® Implementations enables you to accelerate your tests - through a combination of standard test content, methodology, tools and test centre services. At the same time you reduce risks and costs.

As a rule, the introduction of SAP®-based solutions at a company leads to highly complex projects, because a large number - sometimes all - business processes are affected and there is a great need for integration. Moreover, SAP® applications are not static but regularly present new functionalities and improvements in the form of upgrades and service packages. These have to be tested afresh, time and again. In addition to technology-driven changes such as these, the business side also generates a need for regular test runs, with new business processes, reorganisations or the development of new products.

### Business-driven changes

- Mergers, acquisitions
- Reorganisation, business process optimisation
- New products
- New/enhanced functionality

**SAP®**  
Enterprise Software

### Technology-driven changes

- Release upgrades
- Enhancement packages
- Service packages
- Infrastructure adaptations

Permanent change requires frequent testing of SAP® scenarios

## Typical test cases with SAP®

### System upgrades

One of the regularly recurring SAP® scenarios is the release upgrade, for example. SAP® applications undergo several upgrades in the course of their lifecycle. Each one is associated with a full test of the application, which can account for up to 70 per cent of the total costs arising from an upgrade. For 2009, the PAC analysts are anticipating a large number of migrations to the current SAP® release ERP 6.0. This is based on the new NetWeaver® platform and will raise system requirements regarding processors and the database by 20 to 30 per cent. In turn, this will give rise to demand for load and performance tests.

**About SQS:** The SQS Group is the largest independent provider of software quality management and software testing services. Founded in Cologne, Germany, in 1982, SQS has around 1,450 employees in 14 countries worldwide and achieved revenues of € 134.3 million in 2009. With more than 5,000 completed projects under its belt, SQS has a strong customer base, including half of the DAX 30 companies.

**SQS PractiQ® solutions - best practices, services and tools as a package:** Software quality management and quality assurance often need to be faster and less expensive in many companies. SQS has all-in solutions at the ready to handle challenges that companies frequently face and thus enables its clients to lower IT costs and raise the quality of systems.

## Support and Enhancement Packages

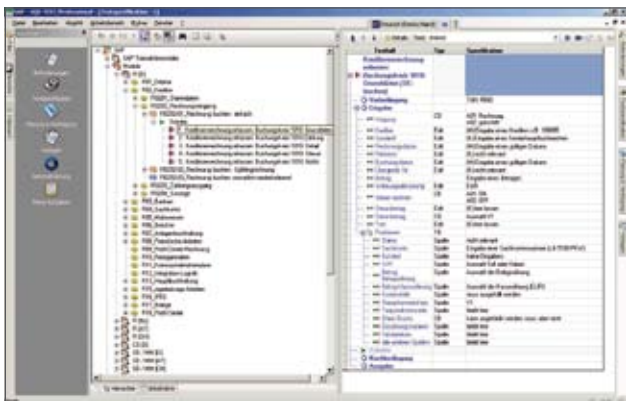
Support packages include both legal changes and corrections to the standard functionality. On average, support packages fall due four times a year; automated regression tests are the obvious choice for dealing with them.

Enhancement packages include function enhancements or new functionalities. Use of these packages is fundamentally optional. Customers should therefore check on a case-by-case basis whether they add value for their company before deciding to go for installation - and the associated test runs.

## SAP® HCM and SAP® FI

Human Capital Management (HCM) is one of the most important standard applications and is among the most test-intensive SAP® modules. Stringent data protection requirements and frequent changes to the law mean that there is great demand for authorisation tests and security tests. SAP® Finance (FI) is the most widely used SAP® module and is closely integrated with numerous other modules. Accordingly, FI is almost always a component part of extensive end-to-end tests.

Thanks to its many years of experience in SAP® Testing, SQS has an extensive library of standard test cases, which are suitable for use at short notice for standard software such as SAP® HCM or FI. In addition, SQS masters a variety of test tools and makes use of SAP® tool features and SQS-TEST®/Professional as basic platforms. The modular approach of the SQS solution allows you to introduce and expand the tool infrastructure step by step.



Standard test case library hosted with SQS-TEST®/Professional

In order to speed up test procedures and reduce both costs and risks, SQS offers the Rapid Testing for SAP® Implementations solution package for SAP® implementations, with the following standard test content, methodology, tools and test centre services:

- **Content:** pre-defined, reusable standard test cases for SAP® HCM and FI modules
- **Methodology:** conception, planning, risk-based management of tests, test data definition and automation, performance tests
- **Tools:** test management, test automation, test data management, load and performance test, defect management, test case specification, test documentation
- **Test centre services:** with flexible and scalable 'on-demand' test resources

With the SQS solution you benefit from the commitment and wealth of experience of independent external consultants who apply proven test procedures from complex SAP® projects. More than that: our specialists also provide sector-specific know-how in addition to their SAP® expertise. Our consultants are therefore at home in both the industry-specific sphere and the SAP® world. The numerous customers who have turned to SQS in relation to SAP® include companies such as BP, the Mercedes-Benz-Bank and Air France/KLM.

## Your advantages at a glance

- Provision of advice without being tied to specific vendors or products
- Analysis, consultancy, training and implementation from a single source
- Consultants with SAP® expertise and sector-specific knowledge
- More than 25 years of experience in software testing
- Familiarity with all tools thanks to partnership with tool providers and vendor-certified SQS tool consultants

## Contact

Do you have any other questions, or do you need more information? We look forward to hearing from you, by phone or e-mail: Marie Erdmann, phone: +49 (0) 2203 91 54-1261, sqsmarketing@sqs.de

SQS Software Quality Systems AG  
Stollwerckstraße 11  
51149 Cologne  
Germany  
phone: +49 (0) 2203 91 54-0

[www.sqs.de](http://www.sqs.de)